

Virtual COM User Manual

2012/03/05

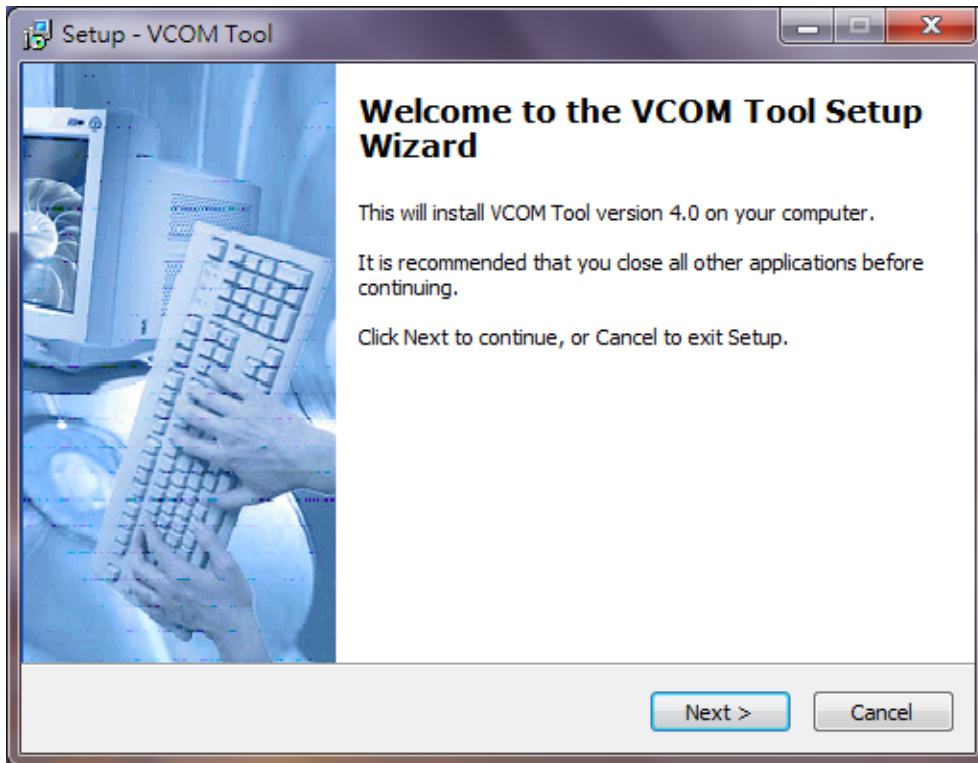
Ver 4.1

【Index】

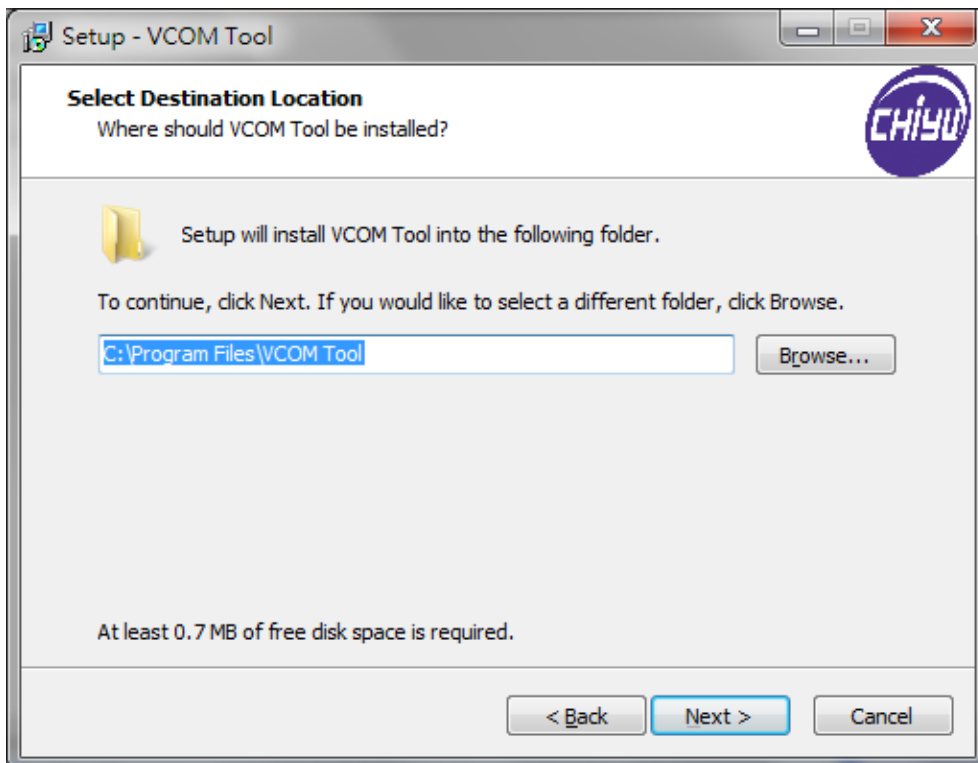
Setup	1
Uninstall	4
Function	5
Parameter definition	13

Setup

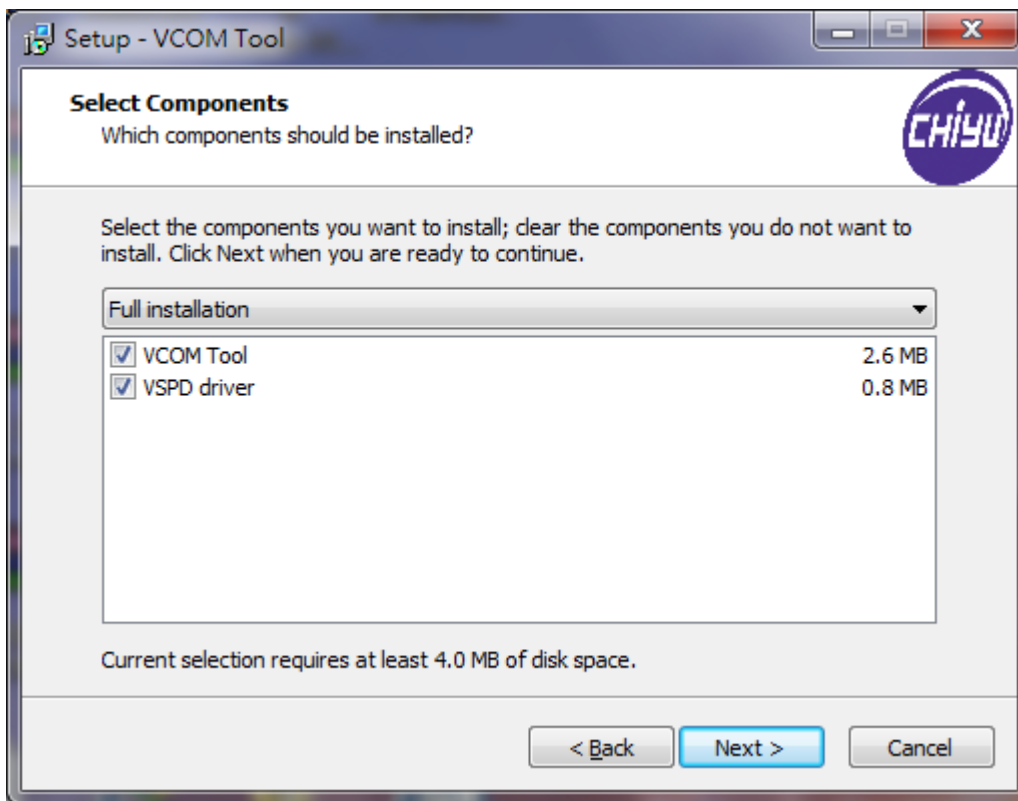
1. Double Click on **VCOMToolSetup.exe** will pop up setup window. Click **“Next”** to continue, please refer to following figure:



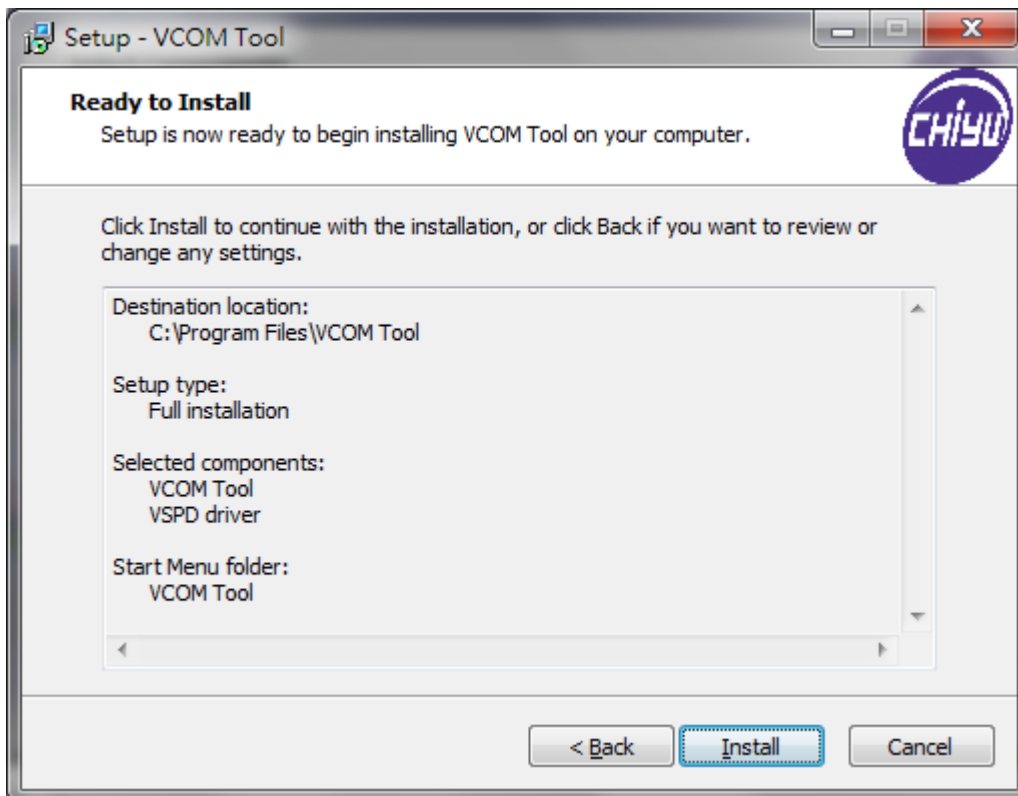
2. Choose install location then click **“Next”** to continue, please refer to following figure:



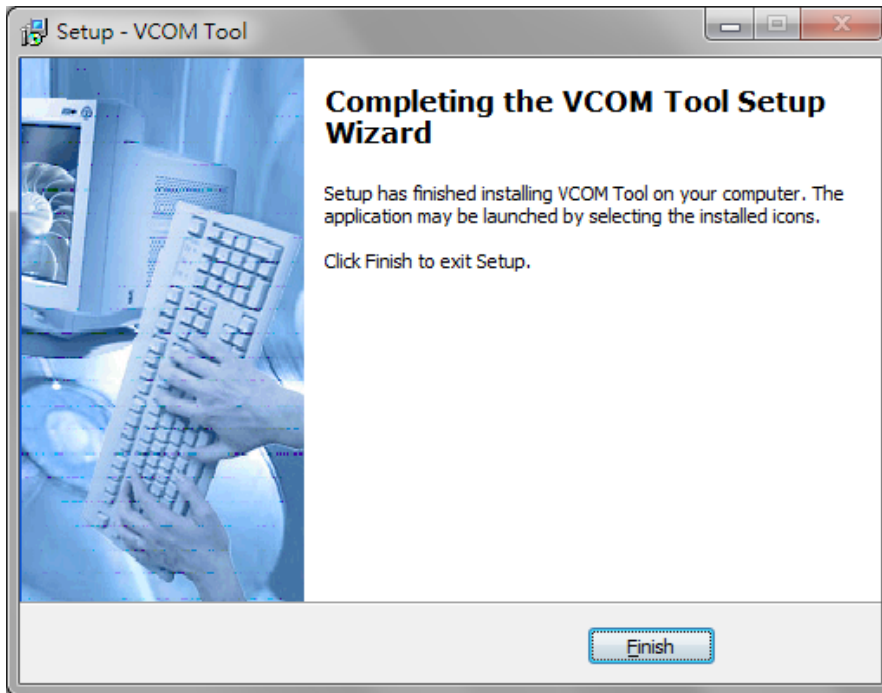
3. Select component to be installed(select all), then click“**Next**” to continue, please refer to following figure :



4. Click“**Install**”to continue, please refer to following figure:



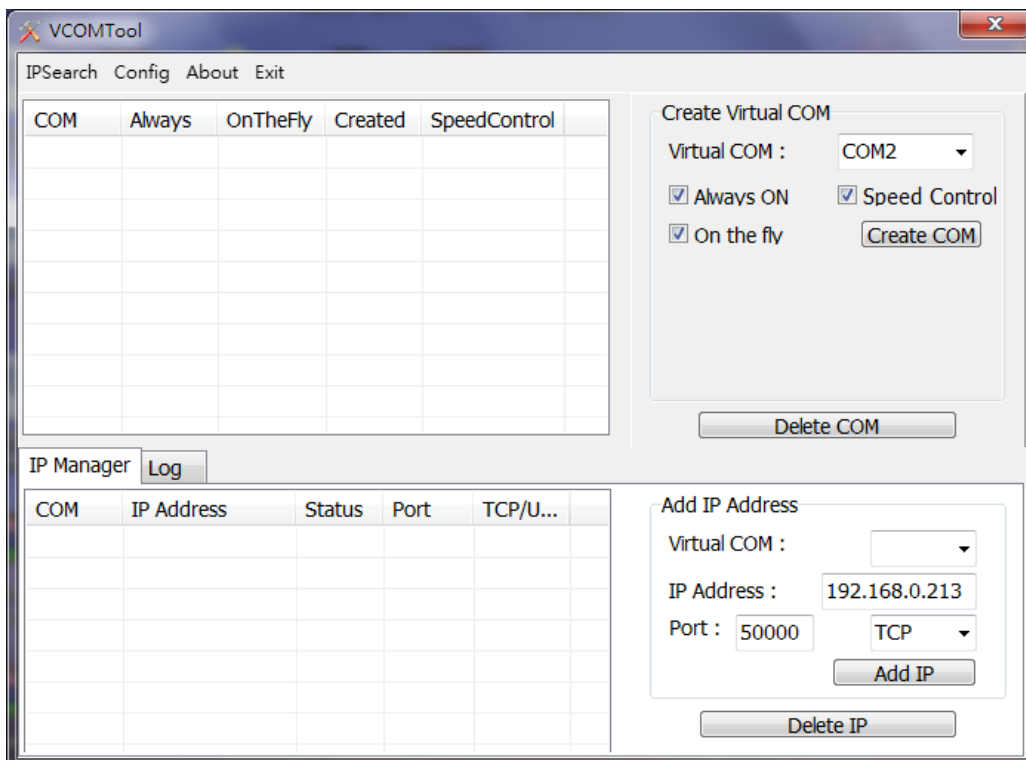
5. Click“**Finish**” to complete installation of VCOM Tool, please refer to following figure :



6. After complete the installation, it will create an icon on desktop as following figure :

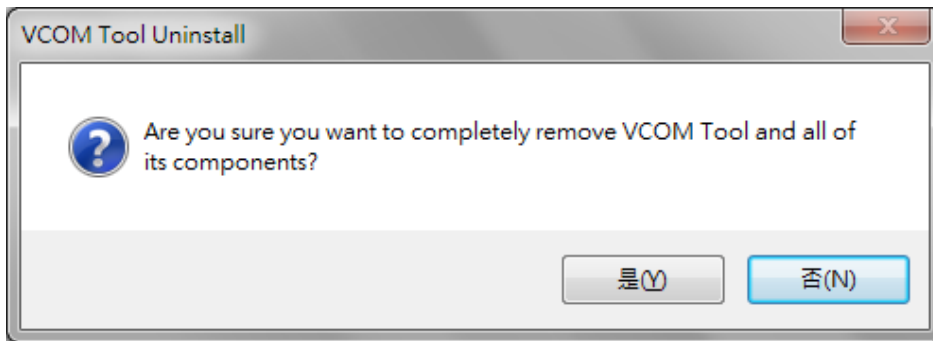


7. Double click VCOM Tool icon to execute the program, VCOM Tool program interface is as following figure :

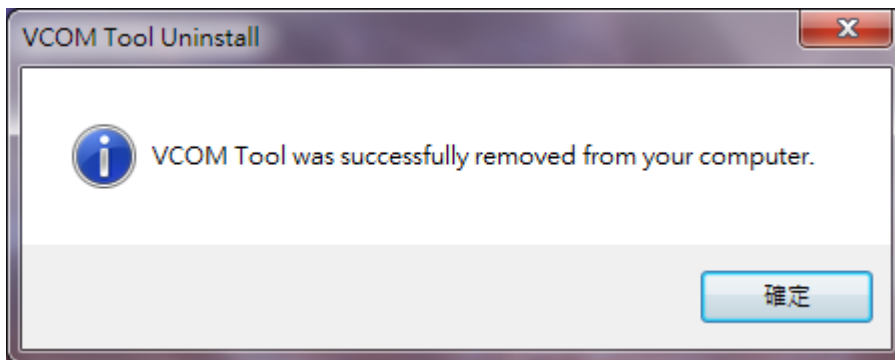


Uninstall

1. **Start Menu→All programs→VCOM Tool.** Select Uninstall VCOM Tool, system will pop up an uninstall window, click “**Yes**” to remove VCOM Tool software, please refer to following figure :



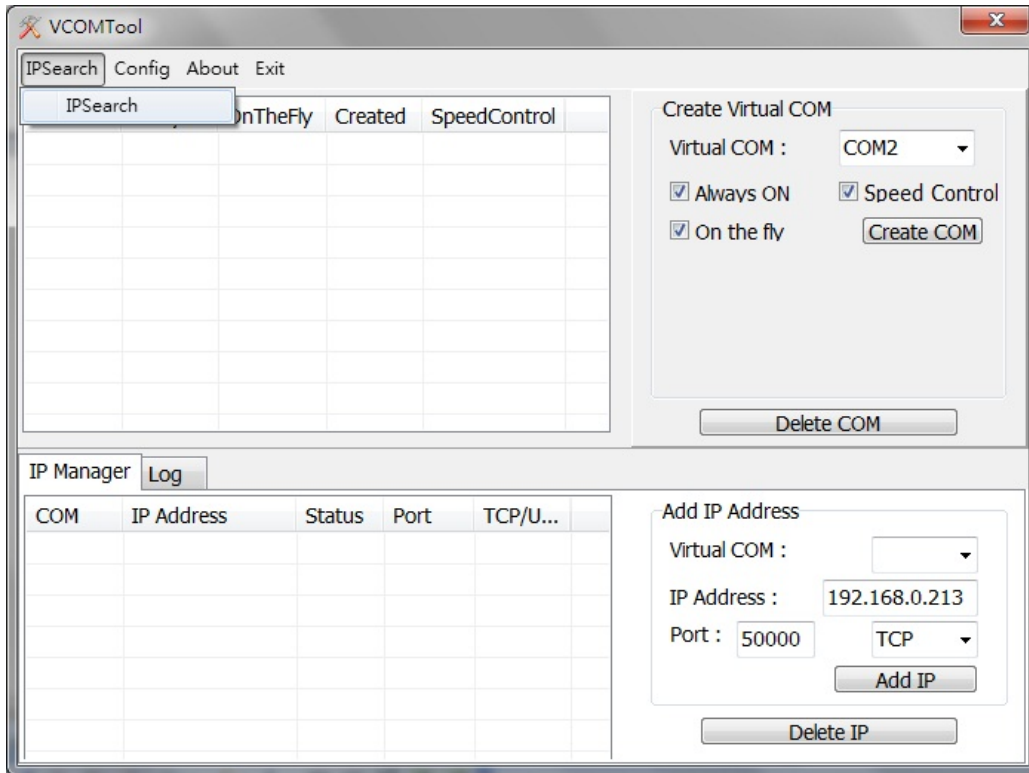
2. When Uninstallation process is complete, system will pop up an window as following figure. Click“**Finish**” to complete the uninstallation.



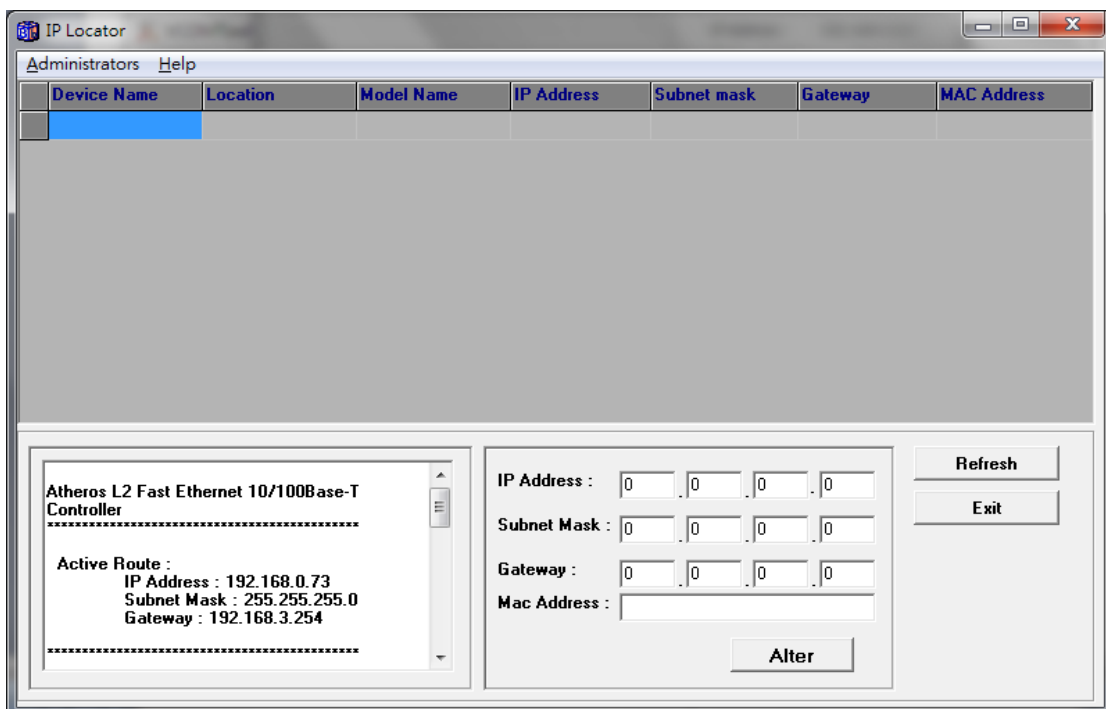
Function

- **IPSearch**

Select IP Search this function will run IPSearch program, please refer to following figure:

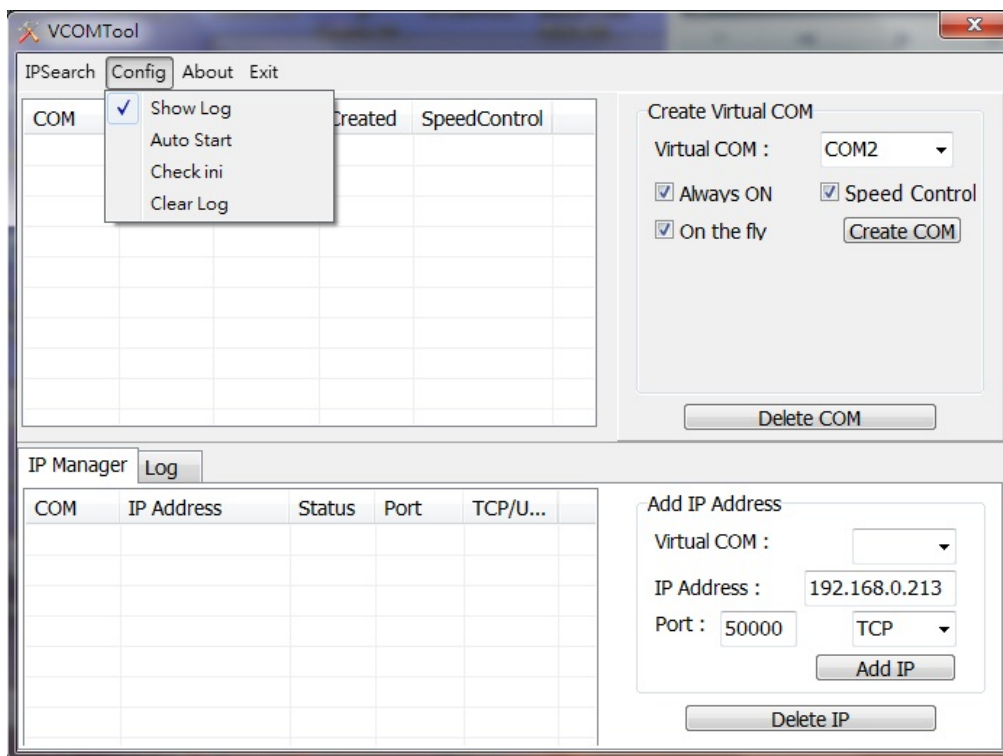


IP Search program interface is as following figure. In IP search program, click **“Refresh”** to find IP address of converter



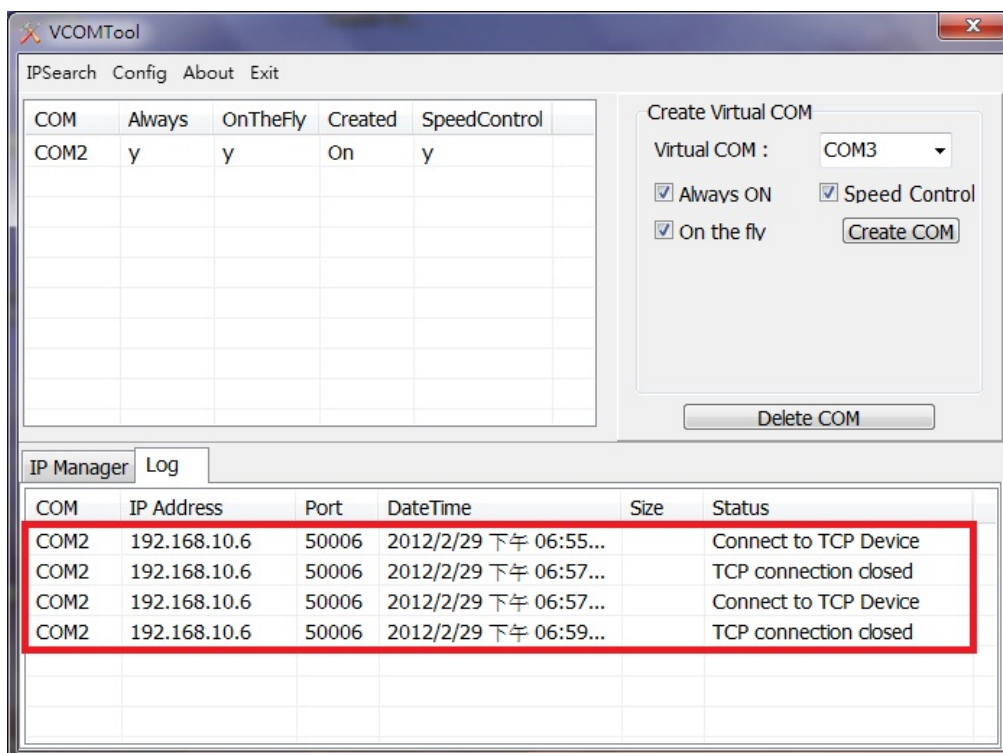
● Config

There are three function can be selected in “Config”, Show log 、Auto start 、 and Clear log. Default function is Show log only, please refer to the following figure :



(1) Show log

If this function is selected, software will record down all transmission information between VCOM Tool and converter, for user to review transmission history. Please refer to the following figure:



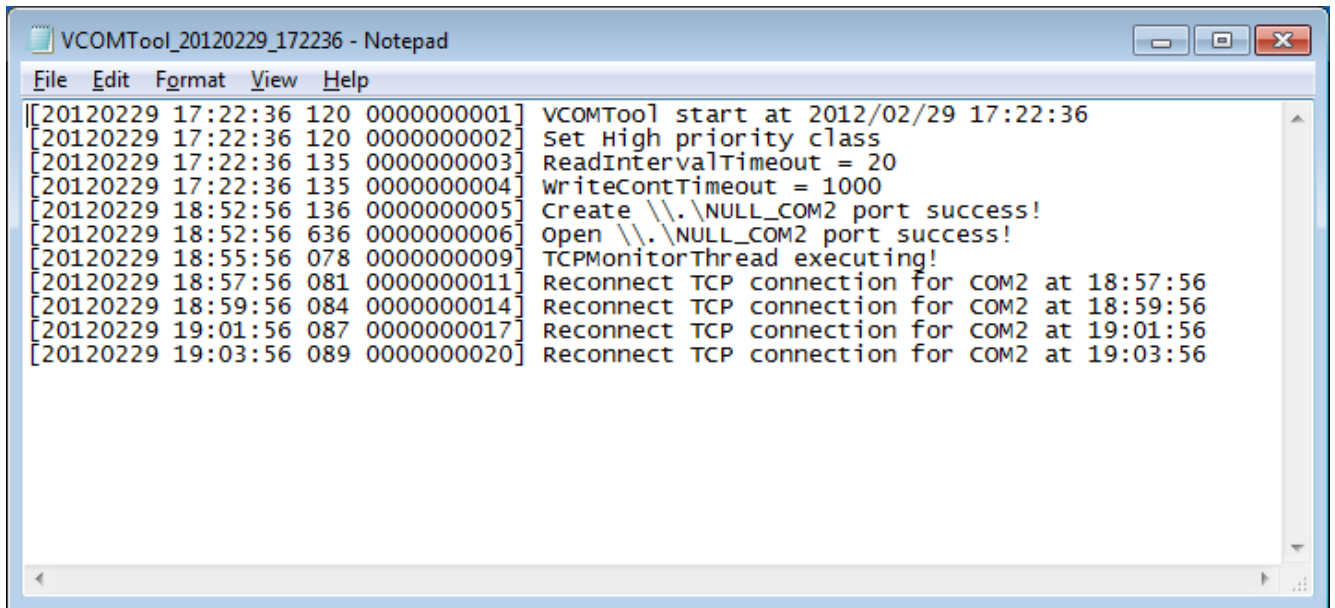
(2) Auto start

If this function is selected, every since computer restart, VCOM Tool will be executed automatically.

(3) Clear log

If this function is selected, VCOM Tool will backup current log information as .txt file format. File name will be “VCOMTool_Date_time.bak”, file location will be

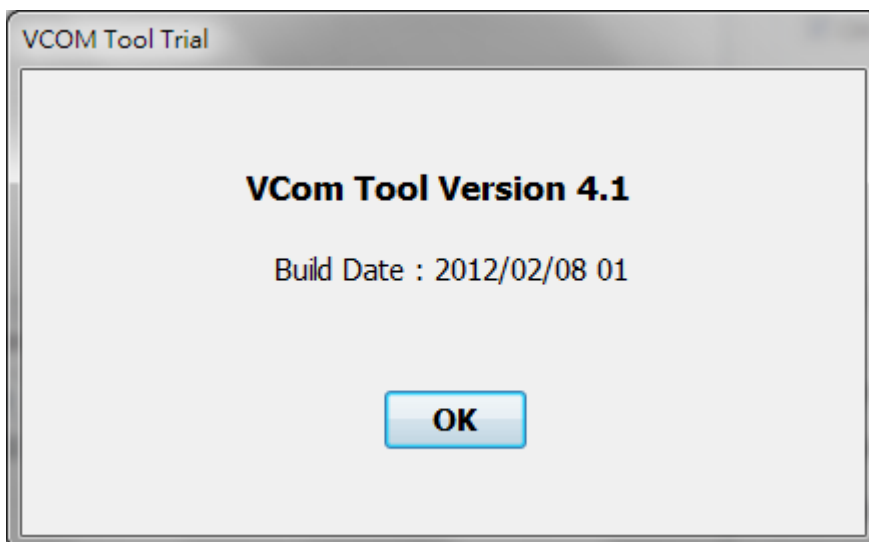
{WindowSystemDrive}\Users\{yourUserID}\AppData\Local\Temp. Saved Information is as following figure :



```
File Edit Format View Help
[[20120229 17:22:36 120 0000000001] VCOMTool start at 2012/02/29 17:22:36
[20120229 17:22:36 120 0000000002] Set High priority class
[20120229 17:22:36 135 0000000003] ReadIntervalTimeout = 20
[20120229 17:22:36 135 0000000004] WriteContTimeout = 1000
[20120229 18:52:56 136 0000000005] Create \\.\NULL_COM2 port success!
[20120229 18:52:56 636 0000000006] Open \\.\NULL_COM2 port success!
[20120229 18:55:56 078 0000000009] TCPMonitorThread executing!
[20120229 18:57:56 081 0000000011] Reconnect TCP connection for COM2 at 18:57:56
[20120229 18:59:56 084 0000000014] Reconnect TCP connection for COM2 at 18:59:56
[20120229 19:01:56 087 0000000017] Reconnect TCP connection for COM2 at 19:01:56
[20120229 19:03:56 089 0000000020] Reconnect TCP connection for COM2 at 19:03:56
```

● About

This function will show version of VCOM Tool, please refer to following figure:



● Exit

Select this will close VCOM Tool

● Create Virtual COM

This function can help you create Virtual COM, max 50 Virtual COM can be created. There are three function, “Always on”, Speed Control”, “On the fly”, can be chosen, default setting of all three function is “ticked”

(1) Always on

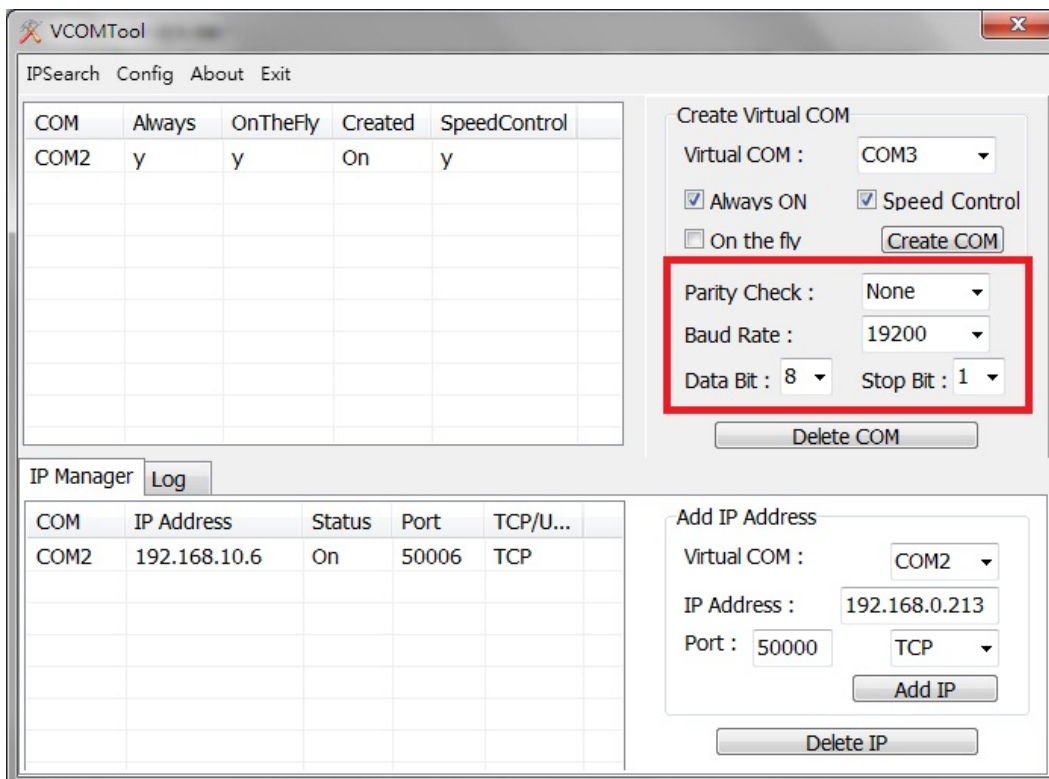
When internet connection is lost, Virtual COM will lost connection with equipment. But if this function is ticked, once internet connection is back, connection between Virtual COM and equipment will build up automatically. On the other hand, if the function is not ticked, even internet connection is back, Virtual COM won’t connect to equipment automatically. [Suggest ticked this function](#)

(2) Speed control

If this function is ticked, transmission speed will be controlled by software. Due to VCOM Tool is “Virtual COM”, if transmission speed is not controlled, data transmission may occur some problem. [Suggest ticked this function](#)

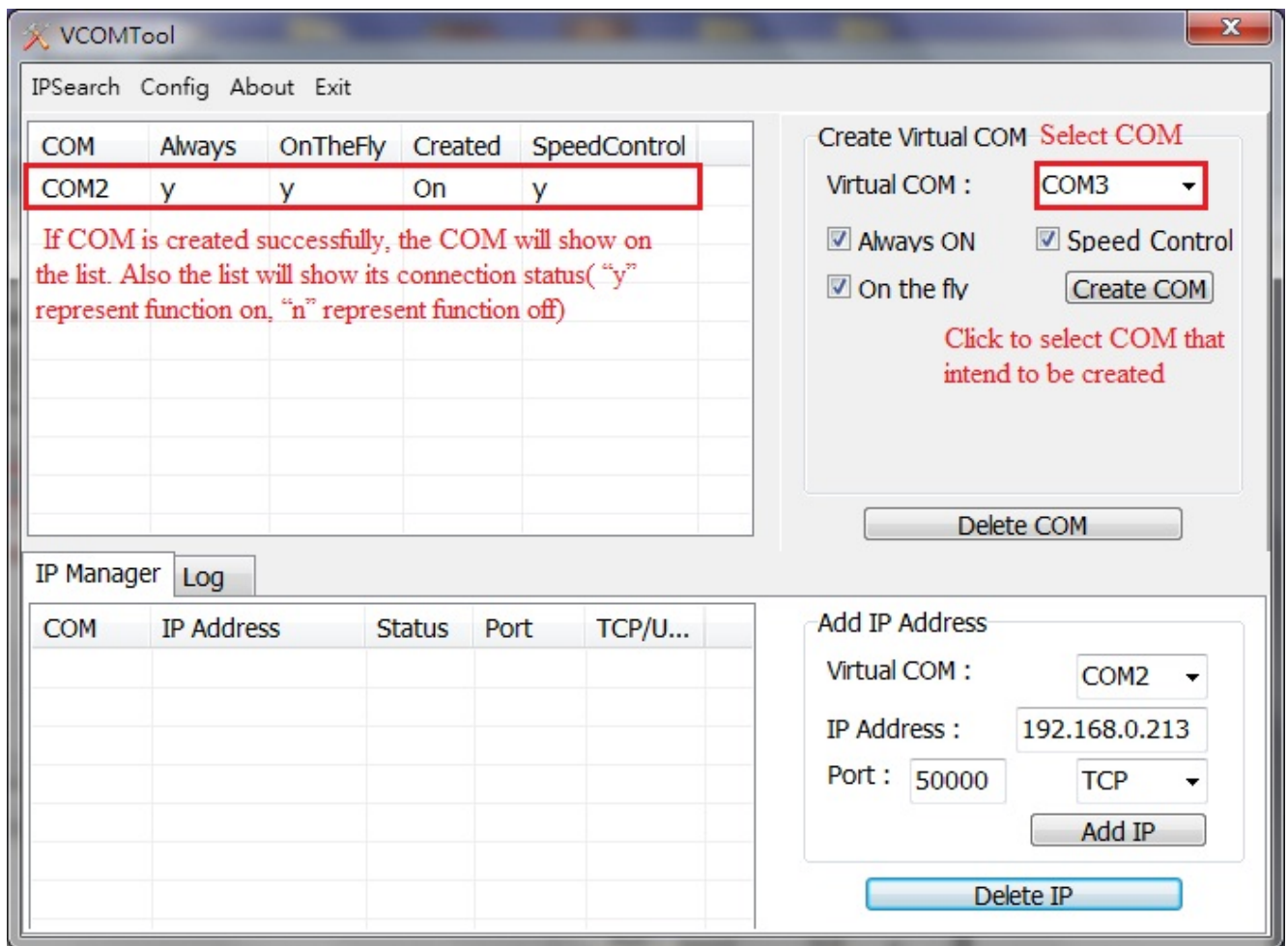
(3) On the fly

If this function is ticked, when setting of Serial type is changed in software ex: Baud Rate 、Data Bits...etc 、 software will automatically apply these changes to equipment. If this function is not ticked, setting in equipment will have to be altered manually [Suggest ticked this function](#)



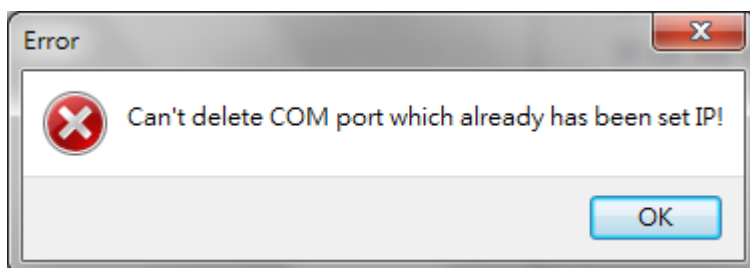
(5) How to create Virtual COM

Drop-down menu, select COM number that intends to be created → select function (Always On、Speed Control、On the fly) → Click Create COM → Virtual COM is created!



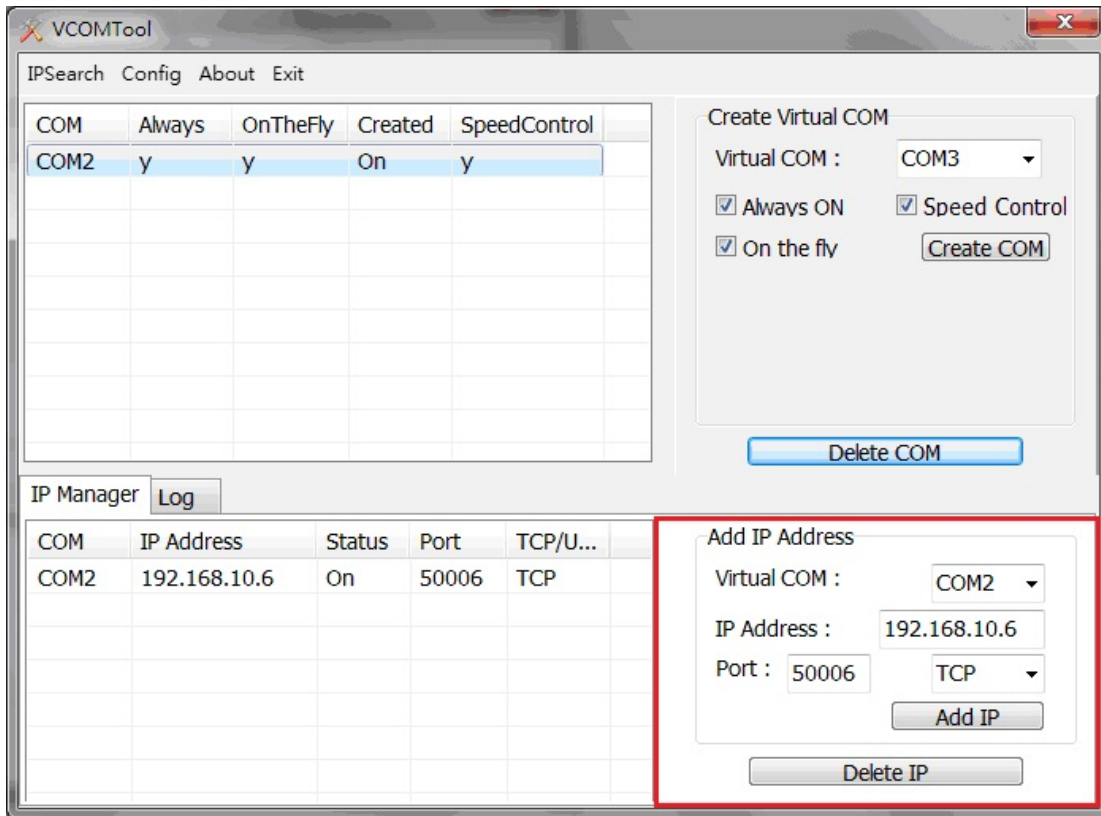
(6) Delete Virtual COM

Firstly, delete the connection with Converter. Then select COM that intend to delete and click “**Delete COM**” to delete the COM. If delete the COM while the connection between COM and Converter is still on, software will pop up error information as following figure:



- **Add IP Address**

This function help build up connection between Virtual COM and Converter. It will also show connection status between COM and Converter.



(1) Virtual COM

All created Virtual COM can be found from drop down menu.

(2) IP Address

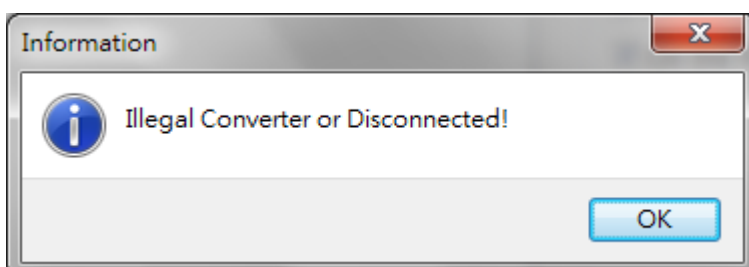
Input IP Address of Converter

(3) Port

Input port number of Converter. From nearby drop down menu, communication type (TCP or UDP) can be chosen

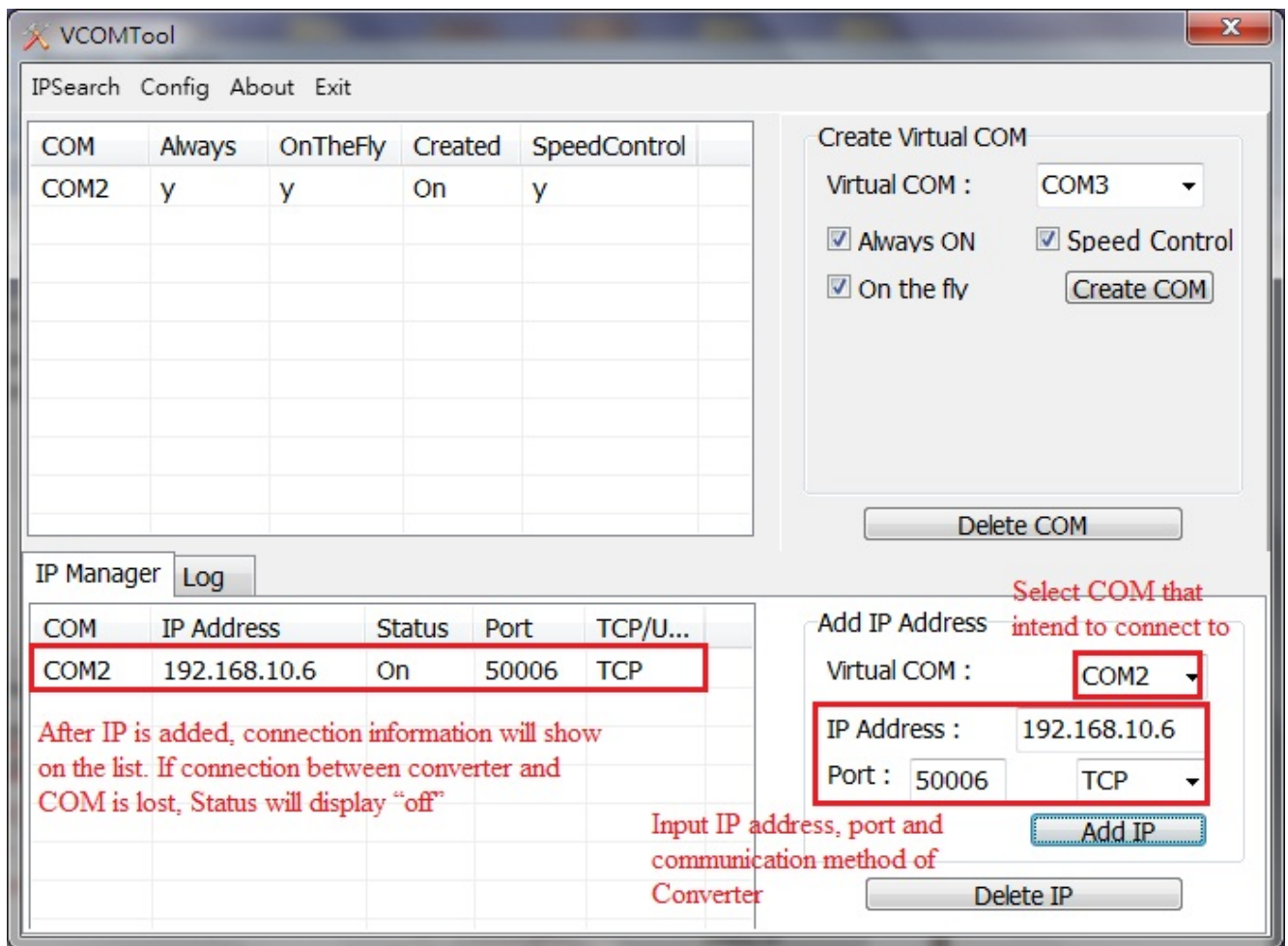
(4) Add IP

Build connection between Virtual COM and Converter. If input wrong IP address or Port number, an error information window will pop up as following figure:



(4) How to build up connection with Converter

Drop down menu, select COM that intend to connect with Converter (COM has to be created first, or here will be blank) → Input IP Address and Port number of Converter → Select TCP or UDP as communication method → Click Add IP → Finish connection built-up.

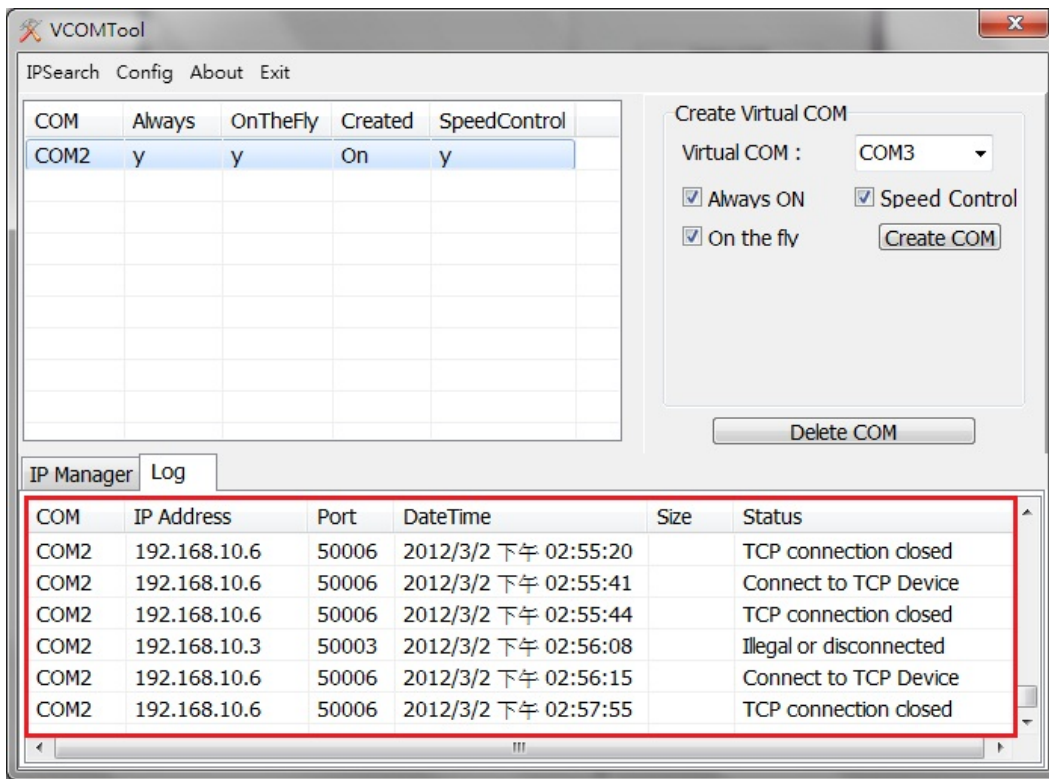


(5) Delete connection between Virtual COM and Converter

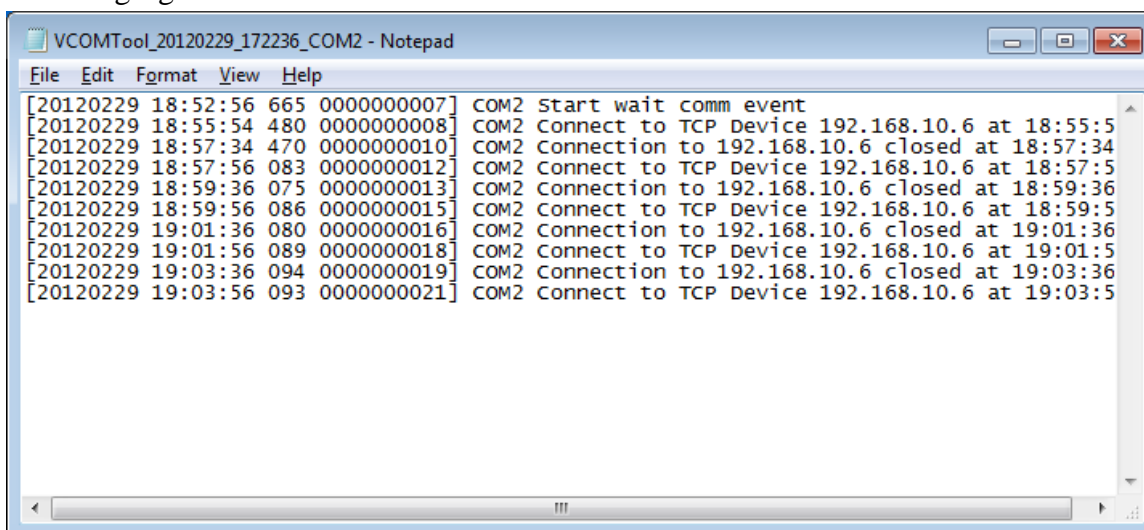
Select connection that intends to delete from connection list and click “Delete IP” to delete connection.

- Log record

VCOM Tool will record down transmission information between Virtual COM and Converter. There are two ways to show this information, one is show up in Log window, please refer to the following figure:



The other method is to save log record as txt file. Once Virtual COM is created, log information will be recorded down automatically. File name will be **VCOMTool_date_time_COM.log** , file location will be **{WindowSystemDrive}\Users\{yourUserID}\AppData\Local\Temp**, log information is as following figure:



Back up file after “Clear log” will also be saved in the same location.

Parameter definition

File name: vcom.ini

File location: WindowSystemDrive}\Users\{yourUserID}\AppData\Roaming\VCOM Tool

If definition is altered, new definition will be effective after restart VCOM Tool.

Parameter Name	Setting instruction	Example
DefaultIP	Set default IP address	DefaultIP=192.168.0.213
DefaultPort	Set default Port Number	DefaultPort=50000
ReadIntervalTimeout	Set ReadIntervalTimeout value of Virtual COM port (ms) 1. Suggested value >1ms 2. This value should not be bigger than Customer AP write in speed. EX: Max transmission speed of COM port tool is 50ms, therefore suggest this value should smaller than 50ms	ReadIntervalTimeout=20
WriteContTimeout	Set WriteTotalTimeoutConstant value of Virtual COM port(ms) 1. Suggest this value should not be smaller than 1000ms 2. If VCOM Tool write in byte number is smaller than setting, suggest increase this value.	WriteContTimeout=1000